

## Polytechnic HS - Auditorium Renovation

### Project Summary

- Seismic upgrade to auditorium building identified on the State's AB300 report
- Major renovation and accessibility
- Interim housing (portables) during construction

### Project Status

- DSA Agency Approval: Complete
- Bid Preparation: Complete
- Bidding: Complete
- Bid Award: Complete
- Construction: Underway
- OPSC Funding Application: Approved
- Interim Housing: Buildings Occupied January 26, 2015

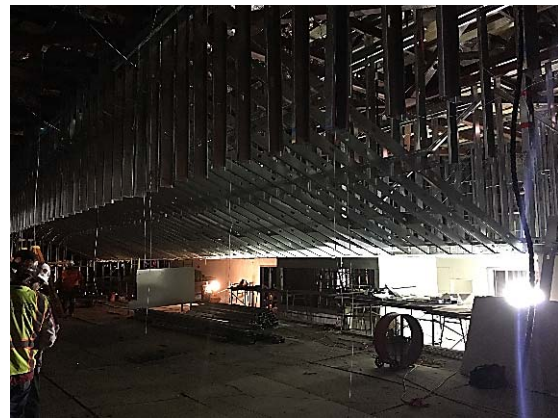
### Upcoming Activities

- Construction: Underway
- Interior retaining wall construction: Complete
- Subgrade preparation for new slab on grade: Complete
- Mechanical/Electrical Rough-in: Complete
- Steel Erection: Complete
- Auditorium Riser construction: Complete
- Roof Truss lead paint abatement: Complete
- SOG form and rebar installation: Complete
- Lobby and Auditorium Wall Framing: Underway
- Auditorium High MEP rough in: Underway
- Completion forecast: Spring 2017



### Project Team

- Architect: LPA, Inc.
- Construction Management Firm: Balfour Beatty Construction
- Contractor: Pinner Construction Company, Inc.





# Project Status

Budget, Commitments, Expenditures, Construction, Funding (thru 6/30/2016)

## Polytechnic HS - Auditorium Renovation

### Summary Status

Description	Budgeted	Committed	Expended
Site Cost	713,083	658,847	666,196
Soft Cost	4,178,459	3,706,104	3,626,177
Hard Cost	15,932,654	15,325,310	10,418,150
Contingency	88,000	-	-
<b>Total</b>	<b>20,912,196</b>	<b>19,090,261</b>	<b>14,710,523</b>

**Budgeted Hard Cost 76.2%**

### Budget Status

Initial Amount	20,227,780
Approved Changes	684,416
Pending Changes	-
<b>Total</b>	<b>20,912,196</b>

**Budgeted Contingency 0.4%**

### Committed Status

Initial Contracted AMT	18,596,759
Contract Changes	1,093,502 5.6%
<b>Total</b>	<b>19,690,261</b>

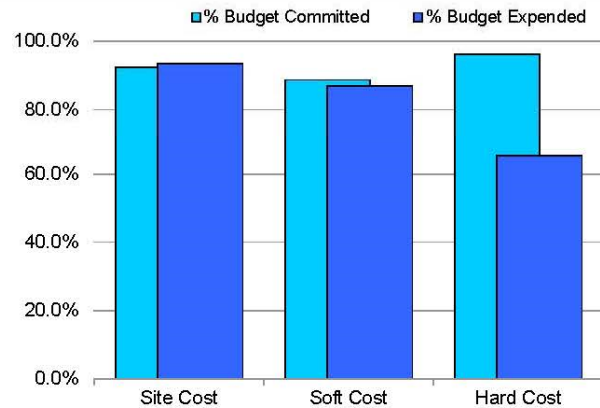
**Budget Committed 94.2%**

### Expenditure Status

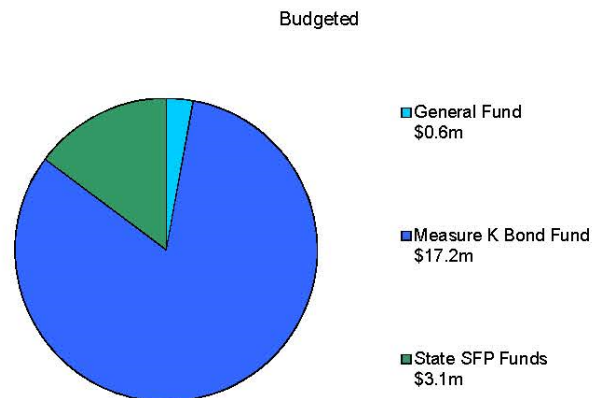
Paid	13,939,702
In Process for PMT	770,821
<b>Total</b>	<b>14,710,523</b>

**Budget Expended 70.3%**

### Progress



### Funding Sources



### Construction Status

Contract	Initial AMT	Current AMT	% Chng	Pending Changes	Work in Place	% Cmpl't	NTP Date	CCD Date
Winter-Park C664262	165,700	168,219	1.5%	-	168,219	100.0%	10/22/2014	01/14/2015
Pinner C664358	14,068,000	14,669,190	4.3%	-	9,786,578	66.7%	01/12/2015	07/20/2016
<b>Total</b>	<b>14,233,700</b>	<b>14,837,409</b>	<b>4.2%</b>	<b>-</b>	<b>9,954,797</b>	<b>67.1%</b>		