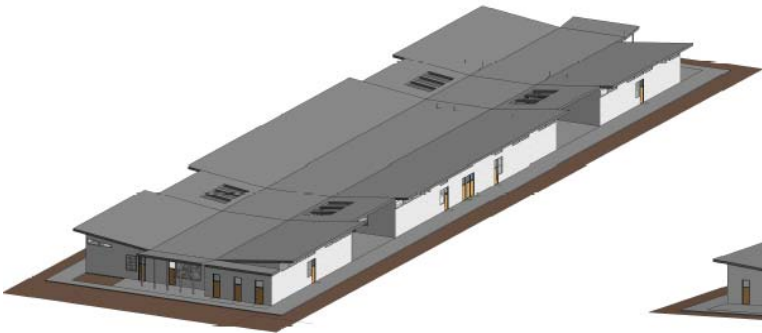


Project Summary

- Conversion of Hill Middle School facility to Sato Academy of Mathematics and Science
- Educational programs in Science, Technology, Engineering and Mathematics
- Building will replace class and lab spaces for Buildings 200, 300, 400
- Demolition of 200, 300 and possibly 400 Summer 2023.



Project Status

- Design Phase
- Construction: Anticipated Summer 2018

Activities

- DSA Submittal: Anticipated Jan. 2018

Project Team

- Architect: PBK





Project Status

Budget, Commitments, Expenditures, Construction, Funding (thru 12/31/2017)

Sato HS Academy - New Construction (New Building) (Sato NC)

Summary Status

Description	Budgeted	Committed	Expended
Site Cost	244,963	84,963	80,663
Soft Cost	2,119,055	1,466,117	820,689
Hard Cost	18,292,983	6,000	6,000
Contingency	589,999	-	-
Total	21,247,000	1,557,080	907,352
Budgeted Hard Cost 86.1%			

Budget Status

Initial Amount	11,247,000
Approved Changes	10,000,000
Pending Changes	-
Total	21,247,000
Budgeted Contingency 2.8%	

Committed Status

Initial Contracted AMT	2,120,667
Contract Changes	(563,587) -36.2%
Total	1,557,080
Budget Committed 7.3%	

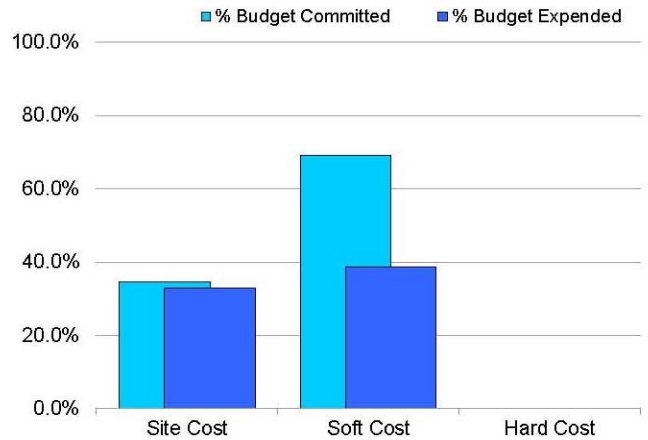
Expenditure Status

Paid	736,635
In Process for PMT	170,718
Total	907,352
Budget Expended 4.3%	

Construction Status

No Construction to report.
Construction is budgeted to start in FY 15-16.

Progress



Funding Sources

