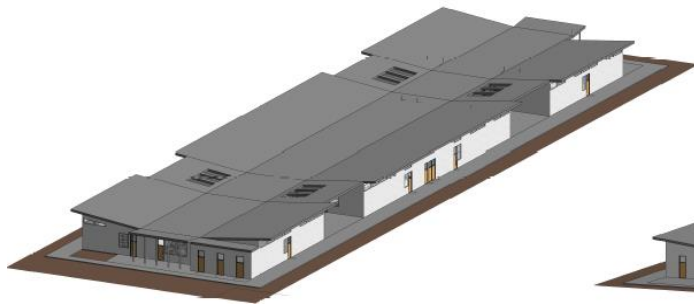


Project Summary

- Conversion of Hill Middle School facility to Sato Academy of Mathematics and Science
- Educational programs in Science, Technology, Engineering and Mathematics
- Building will replace class and lab spaces for Buildings 200, 300, 400
- Demolition of 200, 300 and possibly 400 Summer 2023.



Project Status

- Design phase
- Construction: Anticipated to begin Summer 2018

Activities

- Schematic Design: Completed

Project Team

- Architect: PBK





Project Status

Budget, Commitments, Expenditures, Construction, Funding (thru 6/30/2017)

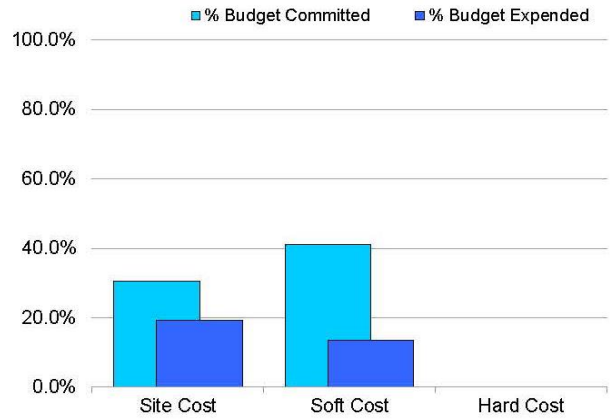
Sato Academy - New Construction (New Building) (Sato NC)

Summary Status

Description	Budgeted	Committed	Expended
Site Cost	244,963	74,963	47,363
Soft Cost	2,109,055	865,393	285,858
Hard Cost	18,292,983	6,000	6,000
Contingency	599,999	-	-
Total	21,247,000	946,357	339,222

Budgeted Hard Cost 86.1%

Progress



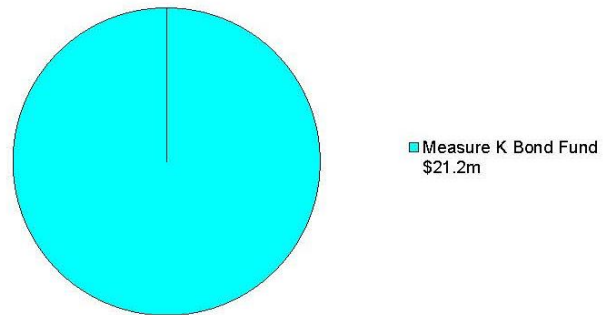
Budget Status

Initial Amount	11,247,000
Approved Changes	10,000,000
Pending Changes	-
Total	21,247,000

Budgeted Contingency 2.8%

Funding Sources

Budgeted



Committed Status

Initial Contracted AMT	940,589
Contract Changes	5,768 0.6%
Total	946,357

Budget Committed 4.5%

Expenditure Status

Paid	329,722
In Process for PMT	9,500
Total	339,222

Budget Expended 1.6%

Construction Status

No Construction to report.
Construction is budgeted to start in FY 15-16.